



# MIAMIBEACH



Dreamstime/Photosvit

## HOTEL/TOURISM PREPAREDNESS

MAY 30, 2024  
VIRTUAL MEETING



Mark Wilson/Getty Images

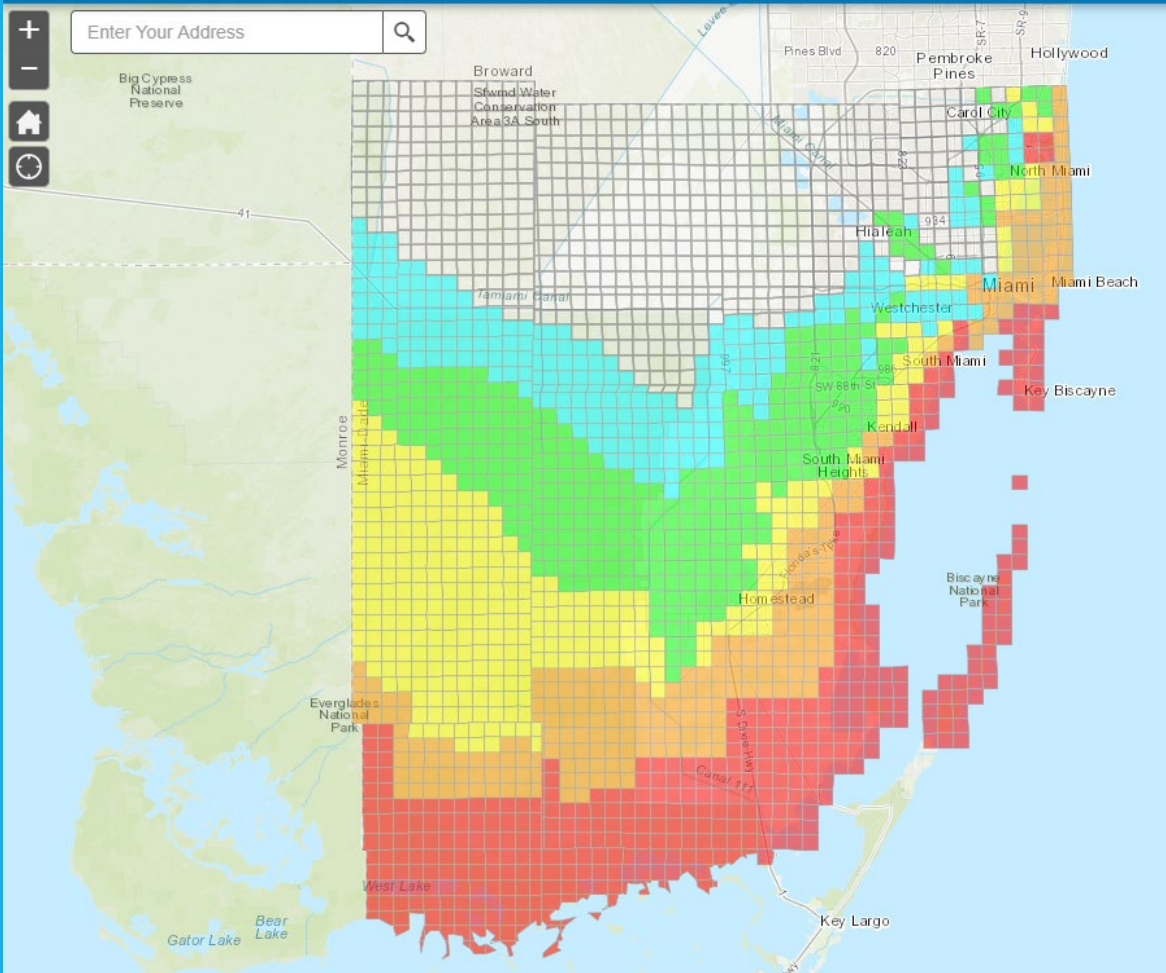
# EVACUATION

All of Miami Beach is in a storm surge planning zone.






Most of Miami Beach is in ZONE B

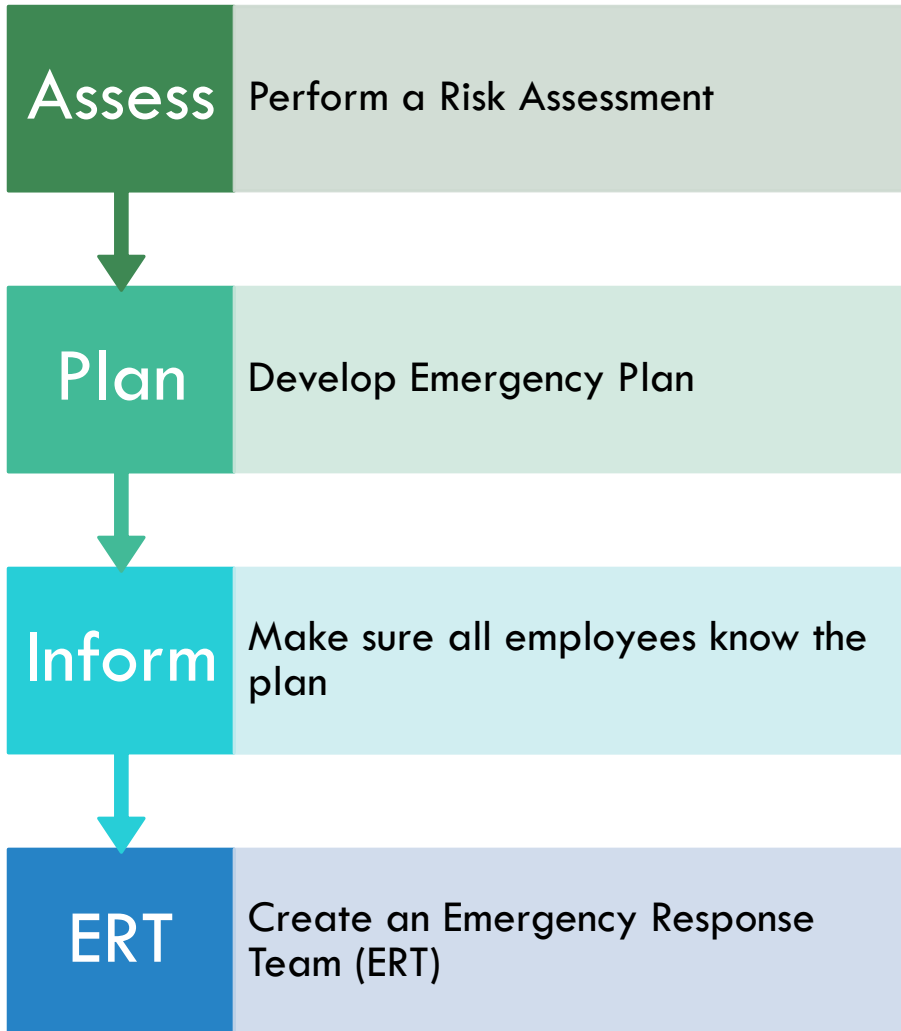
South of Fifth is ZONE A

Miami-Dade County will ask visitors to evacuate first, before residents.



# KNOW THE ZONES

-  A
-  B
-  C
-  D
-  E



## YOUR RESPONSIBILITIES

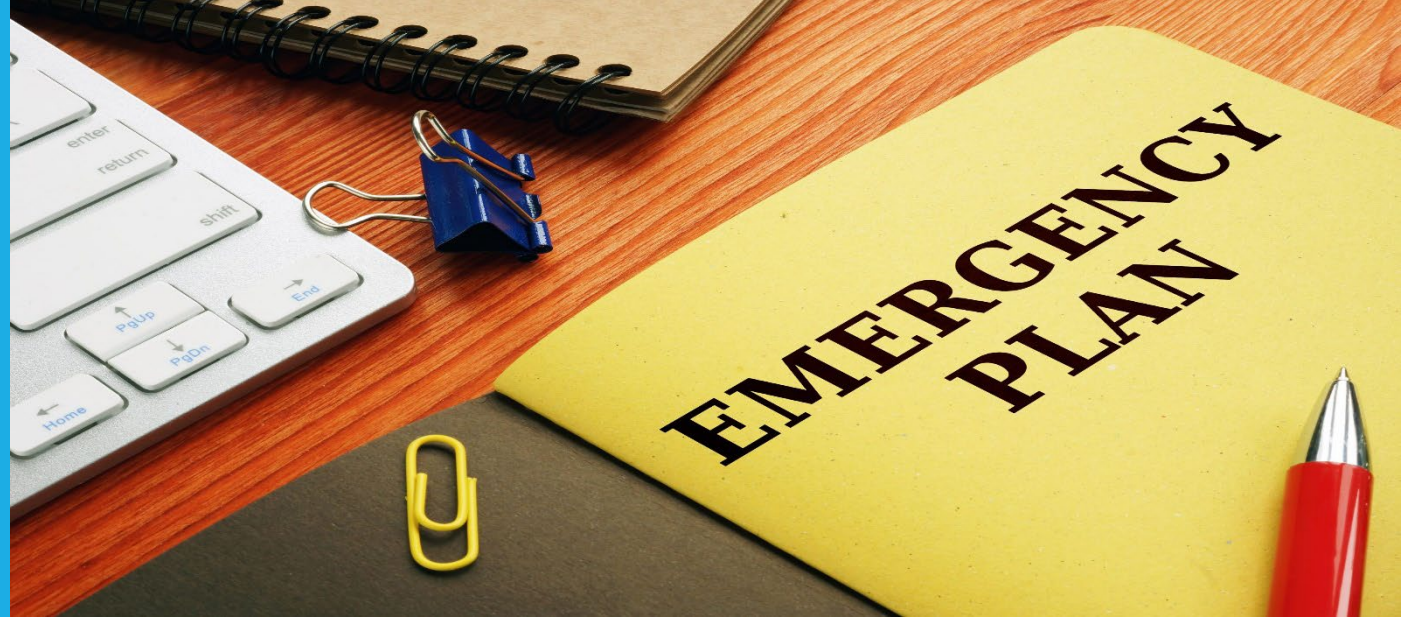
# ASSESS RISK ASSESSMENT



- Identify risks/hazards/stressors
- Potential areas of impact
- Financial impact
- Severity of risk
- Likelihood
- Level of risk
- Responsible party



# PLAN CONTINUITY PLANNING



- Who / What / When / How
- Pre-Disaster planning
  - Policies and procedures
- Disaster Declaration
  - Steps to respond and recover
- Emergency Response
- Business Recovery
- Post-disaster review – Improvement Plans

# INFORM ALL STAFF



- Review policies and procedures
- Assign responsibilities, train, test
- Trusted source for all employees
- Established means of communication
- Feedback and improvement cycle

# ERT

## EMERGENCY RESPONSE TEAM



- Five – eight team members
- Appointed by management
- Represent various departments within the hotel or resort
- Primary team for all emergencies
- Responsible for emergency preparedness and response measures



# ERT

## EMERGENCY RESPONSE TEAM



- Familiar with your disaster plan
- Able to perform damage assessment
- Turn on/off utilities
- Secure the building structure if needed
- Designate responsibilities for action before, during and after a hurricane

# BE EMERGENCY READY



A Hotel Emergency Response Team (ERT) equips employees with skills that enable them to perform basic disaster response operations in an emergency. Having trained volunteers available on staff helps protect the health, safety and lives of people at your workplace. Workplace CERT volunteers are trained using the FEMA CERT Basic Training curriculum.

**\*The 24-hour course is offered as a combination of days and hours**

*To register your hotel staff for a training, call 305.673.7736 or e-mail [DEM@miamibeachfl.gov](mailto:DEM@miamibeachfl.gov).*

**ERT TRAINING**

Disaster Preparedness

Team Organization

Disaster Psychology

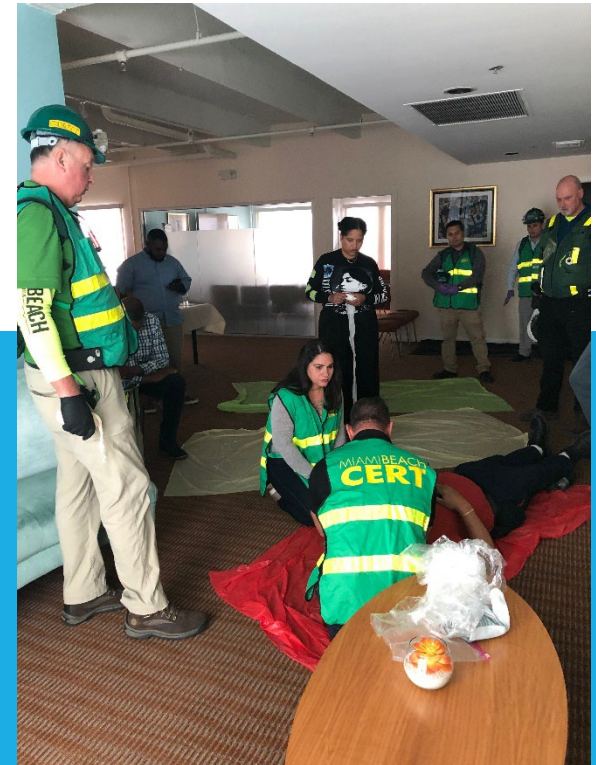
Organization & Management

Medical Operations

Damage Assessment

Fire Suppression

Light search and rescue



# ERT TRAINING



THE CITY OF MIAMI BEACH  
MAINTAINS A DATABASE WITH  
HOTEL INFORMATION.



IT IS YOUR RESPONSIBILITY TO  
UPDATE THE FORM AND SUBMIT IT  
TO THE CITY OF MIAMI BEACH  
WHENEVER THERE IS A CHANGE TO  
ANY OF THE INFORMATION.

# EMERGENCY INFORMATION

## Re-Entry After Evacuation

Home » Emergency Management » Re-Entry After Evacuation » Check Name » The Name/Type » Add Safety (0)

It is important to heed evacuation orders and warnings. Following a situation that warrants evacuation, all individuals must follow the instructions of Miami Beach Police and other local law enforcement that will direct the entry points to the City of Miami Beach. Local officials, including Emergency Management, Law Enforcement, Fire Department Officers and Public Works will continue to determine when an area is safe enough for individuals to return. The message announcing re-entry into the City will ONLY come from official sources through official means such as the Miami Beach Official Twitter account and through local media.



All residents and business employees who evacuate the City when an order is given should carry certain documentation in order to assist local officials in cases of extreme circumstances.

These documents include:



Driver's License,



Proof of Employment (such as Employer credentials, letter on employer letterhead)



Demonstrated Need to enter area (such as a work order or inventory list)

# PROPERTY REGISTRATION

## Prepare Your Hotel or Condominium Team with Special FREE Training

A hotel and condominium Emergency Response Team (ERT) equips employees with skills that enable them to perform basic disaster response operations in an emergency. Having trained volunteers available on staff helps protect the health, safety and lives of people at our workplace. Workplace CERT volunteers are trained using the FEMA CERT Basic Training Curriculum.

The 24-hour course is offered as a combination of days and hours. Register below or call 305.673.7736 or email DEM@miamibeachfl.gov.

### HOTELS: Emergency Response Team Registration

Is this your first submission, or are you trying to update previously submitted information?

First Submission

#### Hotel Information

Hotel Name

Address

Address Line 1

Address Line 2

City

Alabama

State

Hotel Phone Number

(201) 555-0123

Number of Rooms

Date of Submission

### CONDOMINIUMS: Emergency Response Team Registration

Is this your first submission, or are you trying to update previously submitted information?

First Submission

#### Condominium Information

Condominium Name

Address

Address Line 1

Address Line 2

City

Alabama

State

Condominium Phone Number

(201) 555-0123

Number of Units

Date of Submission



## Re-Entry After Evacuation

[MBFD Home](#) [Emergency Management](#) + [Fire Prevention](#) + [Ocean Rescue](#) + [Fire Rescue/Suppression](#) [Public Safety \(911\)](#)

It is important to heed evacuation orders and curfews. Following a situation that warrants evacuation, all individuals must follow the instructions of Miami Beach Police and other local law enforcement that will staff the entry points to the City of Miami Beach. Local officials, including Emergency Management, Law Enforcement, Fire Department Officials and Public Works will consult to determine when an area is safe enough for individuals to return. The message announcing re-entry into the City will **ONLY** come from official sources through official avenues such as the Miami Beach Official Twitter account and through local media.

**All residents and business employees who evacuate the City when an order is given should carry certain documentation in order to assist local officials in cases of extreme circumstances.**

**These documents include:**



**Driver's License,**



**Proof of Employment (such as Employer credentials, letter on employer letterhead)**



**Demonstrated Need to enter area (such as a work order or inventory list)**

## MAKE A HURRICANE PLAN.



HAVE A PLAN

BUILD A KIT

STAY INFORMED

## MAKE A HURRICANE PLAN.



- Evacuation
- Contacts
- Meeting Place
- School/Kids plan
- Pets

HAVE A PLAN



- Water
- Medications
- First Aid
- Battery-powered items
- Can opener
- Plastic Bags
- Cash

- Flashlight
- Toilet paper
- Snacks
- Blanket
- Mosquito repellent
- Sunscreen
- Bleach

# BUILD A KIT



- Reliable sources only
- Local news
- City social media
- Prepare emergency information for guests

**Text**  
**MBALERT**  
**to**  
**888777**  
**miamibeachfl.gov**

**STAY INFORMED**





305 673.7736

DEM@miamibeachfl.gov

MIAMIBEACH  
EMERGENCY MANAGEMENT